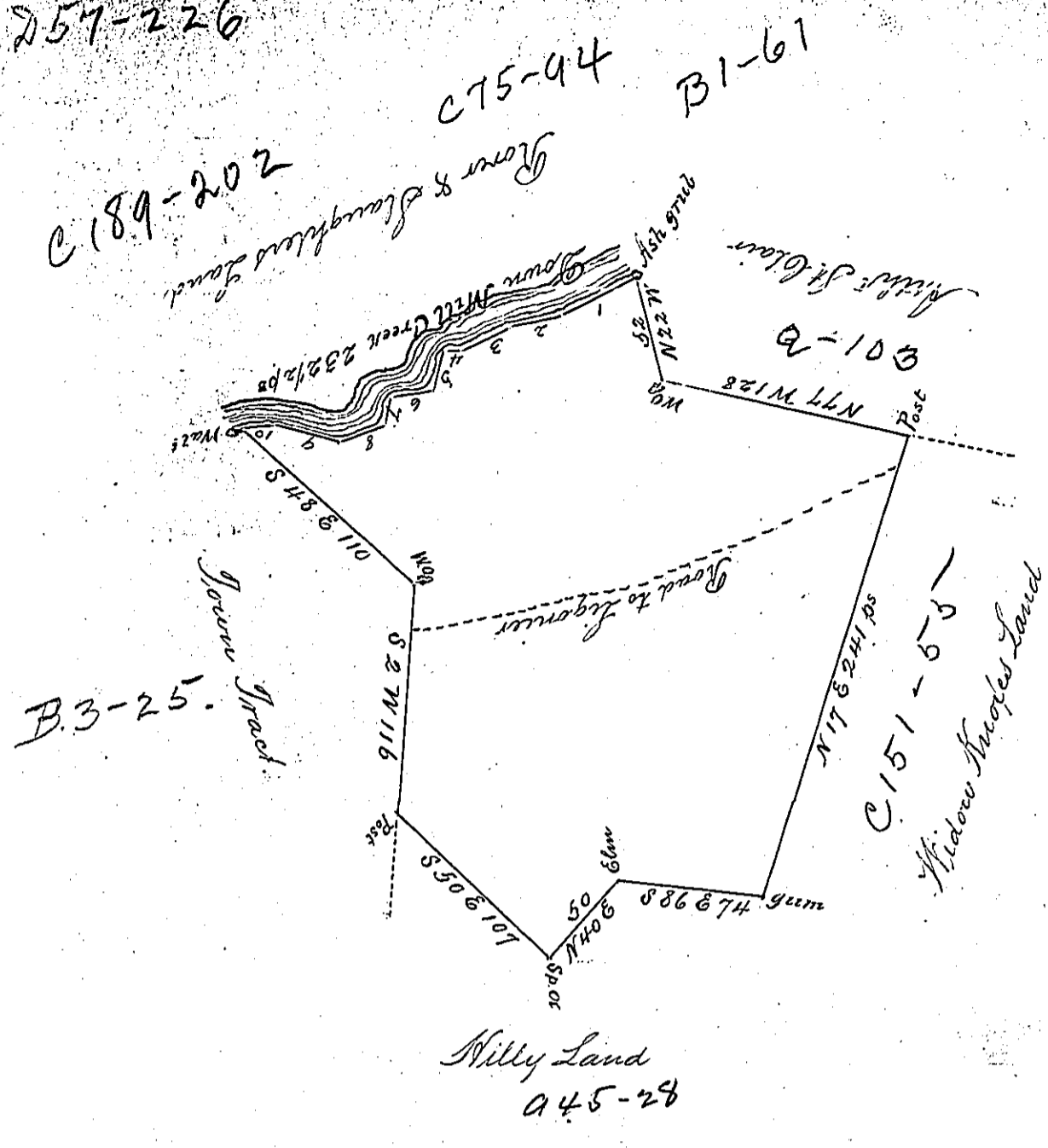


SM 257-226



N <sup>o</sup> of Courses along the Creek	Courses down the Creek	Distance
1	S 57 W	39
2	S 75 W	26
3	S 64 W	31
4	S 84 W	8 1/2
5	S 17 W	20
6	S 87 W	22
7	S 15 W	13
8	S 69 W	23
9	N 79 W	38
10	West	12
Distance		232 1/2

The above tract of Land contains three Hundred & sixty seven Acres and 96 perches with the usual allowance of 6 p cent for Roads situate on the Main Road from Ligonier to Laurel Hill at the Mile Spring Survey'd Nov<sup>r</sup> the 11<sup>th</sup> 1769 - for Daniel St. Clair in pursuance of an Order N<sup>o</sup> 624 & Dated April the 3<sup>d</sup> 1769.

To John Lukens Esq<sup>d</sup>  
S. Gen<sup>l</sup>

Robert M. Crea  
S

IN TESTIMONY that the above is a copy of the original remaining on file in the Department of Internal Affairs of Pennsylvania, made conformably to an Act of Assembly approved the 16th day of February, 1833, I have hereunto set my Hand and caused the Seal of said Department to be affixed at Harrisburg, this

sixth day of March 1895

Isaac P. Brown  
Secretary of Internal Affairs.